

NOPE!®



PRE-BAITED RAT STATION



**Tamper-Resistant
and Robust**



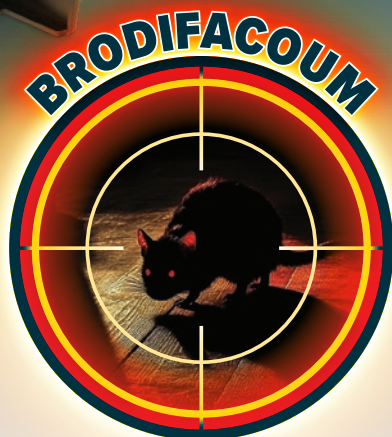
**MAXIMUM
STRENGTH POISON**



**PRE-BAITED FOR
REDUCED HANDLING**



**HIGHLY PALATABLE
BLOCK BAIT**



SAFEGUARD®

BUILT TO PROTECT

SAY **NOPE!** TO RATS

1

FIND THE INFESTATION

2

SET THE BAIT

3

RELAX AND REFILL



- 1. FIND THE INFESTATION:** search kitchens, gaps around pipes and behind units, lofts and sheds, then outside along boundaries, sheds, decking and bins. Look for droppings, greasy smear marks, fresh gnaw marks and active runs.
- 2. SET THE BAIT:** the 3 included bait blocks are already threaded onto the metal bar of the bait station. Close the station to lock it automatically, then safely secure to the ground or wall. Place stations tight to edges and known runs. Space multiple bait stations at least 5 metres apart.
- 3. FIND THE INFESTATION:** check Bait Stations every 2 to 3 days. Refill if empty. Rats usually return to their nests after bait consumption. If the bait has been consumed but control has stalled, switch to **NOPE!® Rat Killer Grain Bait** sachets.

KNOW YOUR ENEMY

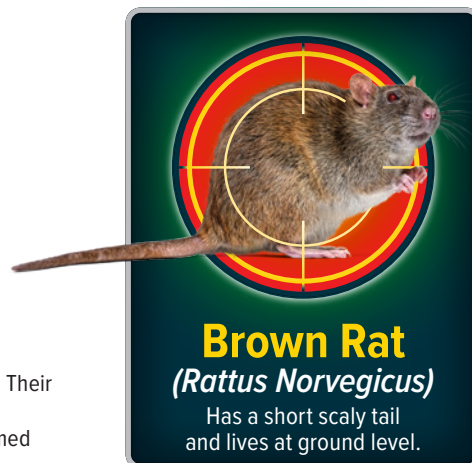
Brown rats are the UK's most common rat and are widespread in towns and countryside. They squeeze through gaps about 15 mm wide, run tight along walls and pipework and burrow under sheds. Look for large droppings, greasy smear marks and fresh gnaw marks.

TYPICAL HIDING PLACES INCLUDE:

- Floor voids
- Under floorboards
- Through broken or leaking drains
- Voids behind kitchen units and plinths
- Behind or beneath appliances
- Under bath panels
- Around toilet cisterns
- Boiler/meter cupboards
- Spaces between walls and pipes/cables
- Under-stairs cupboards

PROVE AND PREVENT

To keep rats away, always remove food, water and shelter first. Their preferred route through the home is tight along walls, so place **NOPE!® Pre-Baited Rat Stations** along edges and near confirmed runs where you find droppings or smear marks.



Brown Rat
(*Rattus Norvegicus*)

Has a short scaly tail
and lives at ground level.

In combination with **NOPE!® Pre-Baited Rat Stations**, start rat-proofing your home with these essential tasks. Remember: blocking access is preferable to continued use of rodenticides.

THE ESSENTIALS

Remove food and water. Clear spills, wipe surfaces, empty pet bowls overnight, fix dripping taps and leaking traps. Block entry. Close the obvious gaps first, then smaller ones.

INSIDE THE HOME

- Store food in fully sealed glass jars or metal tins. Avoid plastic for anything that smells strongly.
- Fit bristle strips on external doors. Aim for no visible light under the door.
- Ensure cupboard doors close fully. Screw loose kitchen plinths tight, so rats can't squeeze behind them.
- Fit purpose-made vent covers or stainless mesh. For rat proofing, use welded mesh with openings no wider than 6 mm.
- Secure cables and pipework in lofts and voids, then close any entry points in ceilings.

OUTSIDE THE HOME

- Cut back climbing plants on walls and fences to leave a 300 mm clear band at ground level. Thin vertical cover that rats use as hidden runways to reach eaves or vents and expose burrow mouths along boundaries.
- Fix leaking external pipes, overflows and guttering. Empty trays and water butts and remove standing water to deny rats the free water they need each day.
- Seal frames on doors and windows, refit brush seals and repair warped thresholds.
- Regularly inspect under decking with a torch. Clear debris and spilt seed. Where gaps persist along the perimeter, consider fixing fine stainless mesh to deny access.
- During treatment and for a week after, stop bird feeding.
- Store all feed in metal containers with tight lids.

NEOPHOBIA (nee-oh-FOH-bee-uh)

– a tendency to dislike anything new*

Be patient! Rats are neophobic, which means it may take up to a week for them to get used to the bait and start munching. Remove all other sources of food and water to speed up bait consumption.

NOPE!®

Trusted by thousands of customers worldwide



HSE Registration: **Brodifacoum 25 Bait Blocks II – GB/N1-2016-0997-0013**
Contains: **Brodifacoum 0.0025% w/w and Denatonium Benzoate 0.001% w/w**

UK: Safeguard Europe Ltd., Redkln Close, Horsham, West Sussex, RH13 5QL.
T +44 (0) 1403 210204 E info@safeguardeurope.com

DE: Safeguard Europe GmbH, Hamburger Straße 11, 22083 Hamburg, Deutschland.
T +49 40 87407563 E info@safeguardeurope.de

© Safeguard Europe Ltd.

www.safeguardeurope.com